



WELLWORTH

HOTELS • LODGES • RESORTS • CAMPS

— TANZANIA • AFRICA —

www.wellworthcollection.co.tz



*“People talk of the sacrifice I have made in spending so much of my life in Africa.
It is emphatically no sacrifice, Say rather it is a privilege.”*

David Livingstone



TANZANIA

A country rich in culture and traditions, with a treasured history of heritage and pride. From the early days of mankind, man has called the land of Tanzania home – its verdant mountains as well as its scrubland plains.

Perched on the edge of the African continent facing the Indian Ocean and servicing several land-locked countries, Tanzania is uniquely and strategically positioned as one of the fastest growing economies and one of the leading in sub-Saharan Africa.

With a track record of safety and political stability, business-friendly environment, abundant wealth of natural resources and its unique geopolitical positioning, Tanzania is one of the top investment destinations in Africa.

Tanzania boasts diverse, breathtaking, world renowned natural wonders including rich wildlife spectacles, myriad of flora, remote, unspoilt and untamed wilderness; pristine ocean beaches and fresh water lakes as well as a rich and diverse cultural heritage of its people.

From the endless plains of the Serengeti, the mighty Mount Kilimanjaro, the natural wonder of the Ngorongoro crater to the tropical beaches of Zanzibar, Tanzania prides itself as the perfect tourist destination.

OPERATIONAL

- A** Ngorongoro Oldeani Mountain Lodge
- B** Lake Manyara Kilimamoja Lodge
- C** Tarangire Kuro Treetops Lodge
- D** Ole Serai Luxury Camp - Moru Kopjes
- E** Ole Serai Luxury Camp - Turner Springs
- F** Ole Serai Luxury Camp - Kogatende
- G** Ole Serai Luxury Camp - Seronera
- H** Kunduchi Wet n Wild Waterpark

UNDER RENOVATION

- I** Kunduchi Beach Hotel
- J** Zanzibar Beach Resort

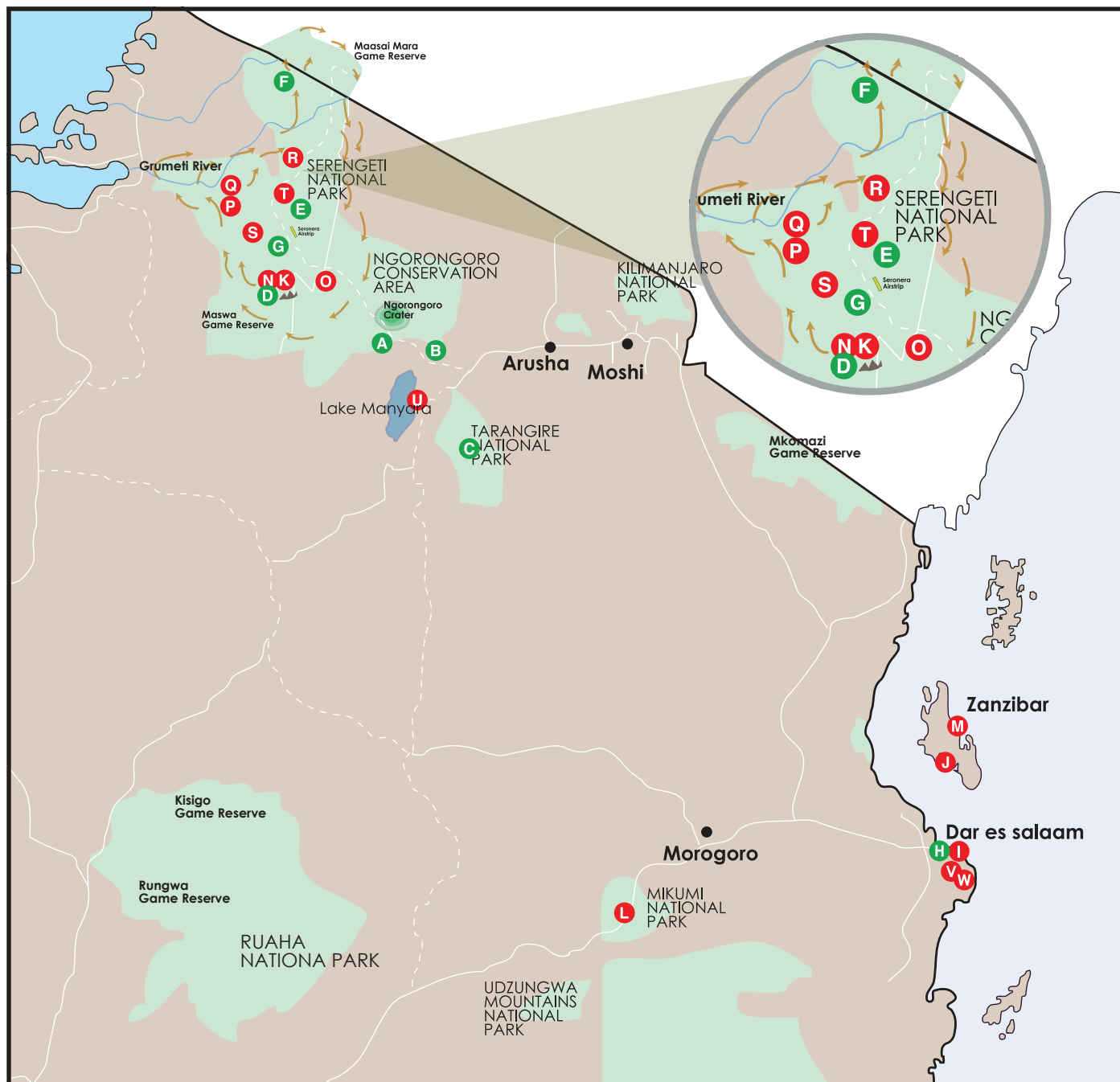
UNDER CONSTRUCTION

- K** Serengeti Lake Magadi Lodge
- L** Mikumi Wildlife Lodge
- M** Zanzibar Whispering Palms

UPCOMING

- N** Serengeti Lake Magadi Lodge *
- O** Ngorongoro - Lake Masek / Ndutu
- P** Serengeti Grumeti Lodge *
- Q** Serengeti Ikorongo Lodge
- R** Ole Serai Luxury Camp - Togo Plains
- S** Ole Serai Luxury Camp - Makoma Hills
- T** Serengeti Turner Lodge
- U** Tarangire Lakeview Lodge *
- V** The New Embassy Hotel
- W** The New Hotel AGIP

 The Wildebeest Great Migration route
  Ultra Luxury Product





CONTENTS

[Ngorongoro Oldeani Mountain Lodge](#)

[Lake Manyara Kilimamoja Lodge](#)

[Tarangire Kuro Treetops Lodge](#)

[Serengeti Lake Magadi Lodge](#)

[Ole Serai Luxury Camp - Moru Kopjes](#)

[Ole Serai Luxury Camp - Turner Springs](#)

[Ole Serai Luxury Camp - Kogatende](#)

[Ole Serai Luxury Camp - Seronera](#)

[Kunduchi Beach Hotel & Resort](#)

[Zanzibar Beach Resort](#)

[Kunduchi Wet-n-Wild Waterpark](#)

[Upcoming Properties](#)

[Upcoming Hotels, Lodges, Resorts & Camps](#)

[Contact us](#)



5 star colonial Lodge situated on a picturesque hill with spectacular views of Oldeani Mountain and the Ngorongoro Crater. The Lodge is elevated with 360 degree views that extend all the way to Lake Eyasi and Lake Manyara. The property is set on 50 acres of pristine lush green gardens and local vegetation with over 130 species of birds.

The Lodge is accessed over a pond and one's first impression is the grand central hallway with wooden trusses looking out over the fire place, infinity pool and out onto the Mount Oldeani, which is part of the caldera of the world famous Ngorongoro crater, only 12kms away!

All 50 suites and the Livingstone Suite have infinite views of the surrounding area. All rooms are tastefully decorated with all the amenities one would expect in a 5 star luxury Lodge.

The spectacular stone main house has all the luxuries including main lounge, grand central hallway, dining room, spa, boutique, conference room, media (TV) room, outside fire place, rim flow pool, billiards room, internet café and childrens' activity room.

Ngorongoro Oldeani Mountain Lodge is the ideal place in which to base your Northern Safari Experience. The Ngorongoro Crater, Oldeani, Lake Eyasi, Lake Manyara and the Ngorongoro Highlands is just a short drive from the Lodge.









ROOMS:

16 Deluxe Twin Suites
34 Deluxe Double Suites
1 Luxury 1-Bedroom Villa
All rooms have panoramic views

LOCATION:

130 km from Arusha
9 km from Ngorongoro Gate
54 Km from Mto Wa Mbu Village
43km from Lake Manyara Airport

SUITES FEATURES:

Inside & Outside Showers
Slipper Baths with views over the highlands
Double Basin
Spacious Private Verandah
Viewing deck
Private Pool
Wireless Internet

ACTIVITIES:

Village Walk, Nature Walk, Swahili Lessons, Masai Cultural Lessons, Tribal Dancers & Drums, Story Telling Around Fireplace, Bird Watching, Star Gazing, Cycling, Tree Planting, Boma Dinner, Wine Tasting, Sundowners.

MAIN HOUSE:

Rim flow pool, Fine Dining restaurant, Outside fire pit, Formal & Informal Lounge, Cigar Bar, Entertainment room inclusive of TV, pool table and games, Banqueting Facilities for up to 50 People Gym & Spa, Formal and informal lounges Gift Shop, Internet Cafe

BAR & DINING:

Dining is table d'hôte with international & traditional cuisine fusion Outside and inside seating overlooking Oldeani Mountain Open for Breakfast, Lunch, High Tea and Dinner





Nestled on the rim of the Great African Rift Valley with stunning views over Lake Manyara, Mount Meru and on a clear day, Mount Kilimanjaro.

The Lodge features 49 suites and a 2 bedroom luxury villa with private pool with expansive views of the Great Rift Valley. Every suite is equipped with tastefully selected amenities and features. From a mini bar to fireplaces and outside showers, every room is built with luxury and comfort in mind.

The Acacia Restaurant serves everything from African delicacies to freshly grilled steaks and mouth watering dishes from around the world. Feeling too cozy in your room? Order in-room service to enjoy your private space in front of the ever expansive African Landscape.

Located next to the main lounge is the Nyati Bar, fully equipped with your favorite drinks and selection of cocktails from our mixologists. Perfect for an aperitif or a post-dinner drink.

The rim flow pool is one of the favorite spots to hang out, have a cocktail in the pool listening to the humming of the birds or just enjoy the existence right in the heart of Mother Nature.

Enjoy the evenings sitting around the bonfire, sharing the safari adventures of the day while you sip on your favorite beverage.

The lodge also has a main house which serves as the spot for dining and lounging away from your room. It also houses the conference facilities, media room, billiards room, a children's activities area, and the spectacular infinity pool









ROOMS:

12 Deluxe Twin Suites
32 Deluxe Double Suites
04 Deluxe Family Interconnecting Suites
1 Luxury 2 Bedroom Villas
All rooms have panoramic views.

LOCATION:

106 km from Arusha
14 km from Lake Manyara National Park
15 km from Mto Wa Mbu Village
6 km from Lake Manyara Airport.

SUITES FEATURES:

Inside & Outside Showers, Slipper Baths with views over the high lands Double Basin, Spacious Private Verandah & View indgeck Wireless Internet

ACTIVITIES:

Village Walk, Nature Walk, Swahili Lessons, Masai Cultural Lessons, Tribal Dancers & Drums, Story Telling Around Fireplace, Bird Watching, Star Gazing, Cycling, Tree Planting, Boma Dinner, *Private Dinner at Room Deck, *Private Dinner at Pool Side, *Breakfast in Bed,*Breakfast at Private Room Deck,*Candle Lit Bubble Bath with Sparkling Wine & Cheese Platter, Interactive Live Cooking Station, *Private On-Site Picnic, Night Game Drive (at Lake Manyara National Park), Tree Top Walk, Wine Tasting, Sundowners. *(*Recommended for Honeymooners)*

MAIN HOUSE:

Rim flow pool, Fine Dining restaurant, Outside fire pit, Formal & Informal Lounge, Cigar Bar, Entertainment room inclusive of TV, pool table and games, Banqueting Facilities for up to 50 People Gym & Spa, Formal and informal lounges Gift Shop, Internet Cafe

BAR & DINING:

Dining is table d'hôtel with international & traditional cuisine fusion. Outside and inside seating overlooking the escarpment. Open for Breakfast, Lunch, High Tea and Dinner. Cigar & Whisky Bar
Boma dinner experience at our secluded bush boma





Tarangire National Park, named after its life giving Tarangire River, is famous for fostering one of the largest concentration of Elephants in Tanzania who live and co-exist with other wildlife in their natural habitat. The Park is also famous for its abundance of Baobab trees.

Indulge in lavish luxury at the Tarangire Kuro Treetops Lodge, which is nestled deep within the heart of the National Park. The Lodge is strategically located atop an elevated Kopje hill, overlooking the Tarangire River and the Silale valley leading to the Silale swamp in the west - which is famous for being visited by different wildlife throughout the year due to the availability of water.

The uniquely designed Camp consists of 25 tree-top style tailor-made tents each designed with luxury beddings, an en-suite bathroom with an indoor and outdoor shower, and a private veranda with the perfect vantage point. The room is designed to offer an optimum 180-degree view even from your bed or while enjoying a meal or drink allowing you to connect with the ever-present wildlife theatre from the privacy and comfort of your rooms. The main pavilion is built within the Kopjes Rocks, consisting of several comfortable lounges, viewing decks, a fireplace, swimming pool, an open dining concept at the Maasai Boma where Guests can enjoy dinner under a large canvas of brightly lit stars on a clear night surrounded by sounds of the bush as if a wild calling of welcome.

Thinking "Green", this eco-conscious camp runs on 24-hours solar power making it possible to enjoy the finer things while minimizing environmental impact.









GUEST SLEEPER TENTS VARIETY:

25 Luxury Treetop Rooms en Suite – 60 sqm each.

BED & TENT SIZES:

Double bed – 2000mm x 2000mm

Twin beds – 1200mm x 2000mm

TENT FEATURES:

Elevated Treetop Tents on stilts, En- Suite Toilet & Shower with nature views, Ultra Luxury Memory Foam Beds, Extra Spacious Private Verandah & Viewing Deck, In-Room Safe, Tea/Coffee making facility, Hair Dryer (Upon guest request), IP Phone, Floor Standing Fan, 24-Hour power form invertors, Backup power through generator, Rechargeable Torch, Solar water heater, Pressurized running Showers, Mosquito Repellent

LOCATION:

Central Tarangire National Park, next to the Tarangire Kuro Airstrip and the main Tarangire River.

8 kms from Kuro Airstrip.

143 kms from Arusha

ACTIVITIES:

Maasai Cultural lessons, Story Telling around Fireplace Swahili Lessons, Star Gazing, Boma Dinner, *Private Dinner at Tent Deck, *Breakfast in Bed, *Breakfast at Tent Deck, *Bush Breakfast *Bush Lunch, Full Day Game Drive, Half Day Game Drive, Balloon Safaris
(*Recommended for Honeymooners)

MAIN HOUSE:

Rim flow pool, Fine Dining restaurant, Outside fire pit, Formal & Informal Lounge, Pool table and games, Gym & Spa, Boutique Shop

BAR & DINING:

Tarangire Restaurant is table d'hote with International & Traditional Cuisine Fusion, Open for Breakfast, Lunch, High Tea and Dinner, Boma dinner experience under a Baobab Tree





The Majestic Serengeti National Park is perhaps one of the most prolific places to experience the raw and unhindered wilderness like nowhere else in the world, from the Great Annual Migration spectacle to the varied landscapes and amazing varieties of wildlife within that from part of the endless plains of the world famous Serengeti.

This Lodge is perched high atop a hill, inside the heart of the Serengeti National Park and overlooking the game-filled Serengeti plains, offering panoramic and unobstructed views extending to the Moru Kopjes, Mbalagati River and lake Magadi. The Serengeti Lake Magadi Lodge sits on an exotic location that lets you witness the richness of the Serengeti and its varied variety of wildlife from the comfort of your room.

This ecofriendly solar powered luxury lodge consists of 60 handcrafted and luxuriously appointed suites set in a serene and intimate setting. The lodge is richly decorated with mesmerizing interior finishing and boasts expansive views of the surrounding areas from wherever you are on the lodge. All the rooms including the family inter-leading rooms are furnished with lush beddings/furnishings and feature bathtubs, outdoor stone nature showers that are open to the sun and the stars, dual in door showers as well as shaded private decks affording spectacular panoramic views over miles of the Serengeti plains.

Apart from luxurious accommodation, this permanent lodge offers an eclectic assortment of fine dining options, outstanding conference facilities, exotic wedding destinations, an in-house gym and spa, and Wi-Fi facilities throughout the lodge. Here, you get to immerse yourself into an authentic East African safari experience, combining Africa's abundant wildlife and inspiring natural ambience with luxurious lodging with exceptional Tanzanian hospitality and services.









ROOMS:

40 Deluxe Double Suites

14 Luxury Twin Suites

04 Interconnecting Suites

All rooms have panoramic views.

SUITES FEATURES:

Inside & Outside Showers

Sleeper Baths with views over the highlands | Double

Basin | Spacious Private Verandah & Viewing deck

Wireless Internet

LOCATION:

This Lodge is perched high a top of a hill, inside the heart of the Serengeti National Park and overlooking the game-filled Serengeti plains.

ACTIVITIES:

Game Drive, Swahili Lessons, Masai Cultural Lessons, Tribal Dancers & Drums, Star Gazing, Boma Dinner, *Private Dinner at Room Deck, *Private Dinner at Pool Side, *Breakfast in Bed, *Breakfast at Private Room Deck, *Candle Lit Bubble Bath with Sparkling Wine & Cheese Platter, Interactive Live Cooking Station, *Private On-Site Picnic, Wine Tasting, Sundowners.

*(*Recommended for Honeymooners)*

MAIN HOUSE:

Rim flow pool, Fine Dining restaurant, Outside fire pit, Formal & Informal Lounge, Cigar Bar, Entertainment room inclusive of TV, pool table and games, Banqueting Facilities, Gym & Spa, Boutique Shop.

BAR & DINING:

Acacia Restaurant is table d'hote with International & Traditional Fusion cuisine. Outside and inside seating overlooking Serengeti Plains. Open for Breakfast, Lunch, High Tea and Dinner

Cigar & Whisky Bar.

Ravine dinner experience at our secluded bush ravine.



This Luxury Camp is ideally located within Central Seronera area of the famous Serengeti National Park in Tanzania around the vicinity of the famous Moru Kopjes and Lake Magadi.

The Camp site is perched between the Rongai Hills & Nyaroboro Hills, a few metres away from the banks of the Mbalageti / Seronera River having an abundant variety of resident wildlife (including all the Big 5) as well as a Hippo Pool located only a few metres away from the camp.

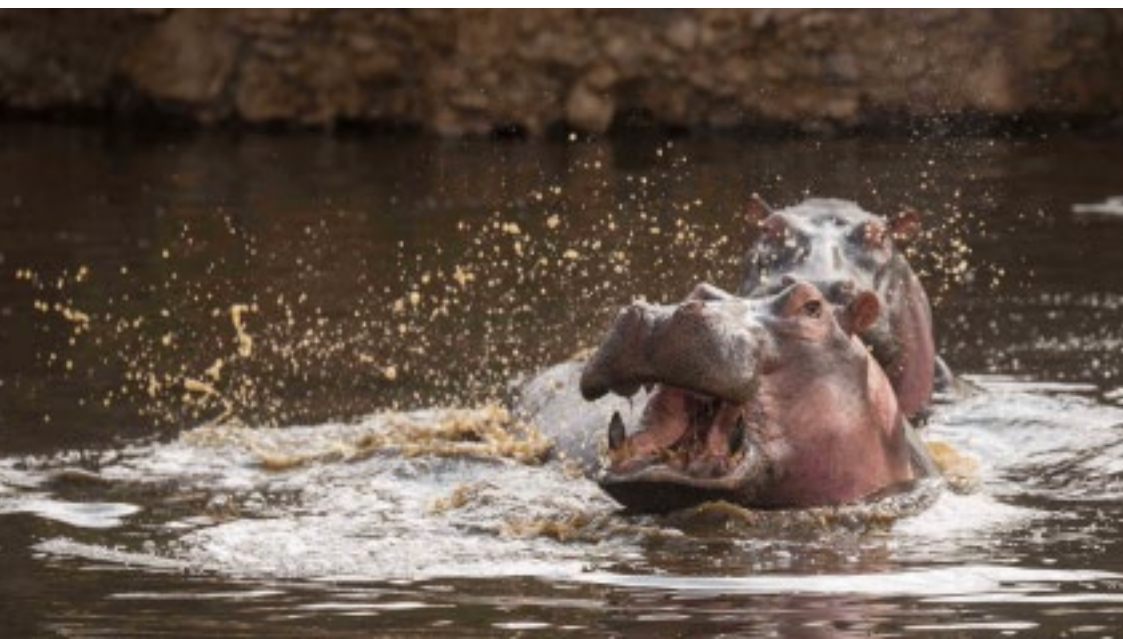
Due to the Campsite's ideal location, the great spectacle of the world-famous Annual Migration can be witnessed almost as close as to the camp's doorsteps – since the site lies along one of the main migratory corridors/routes which the wildebeest use during their Great Migration going to and fro the North and South of the Serengeti.

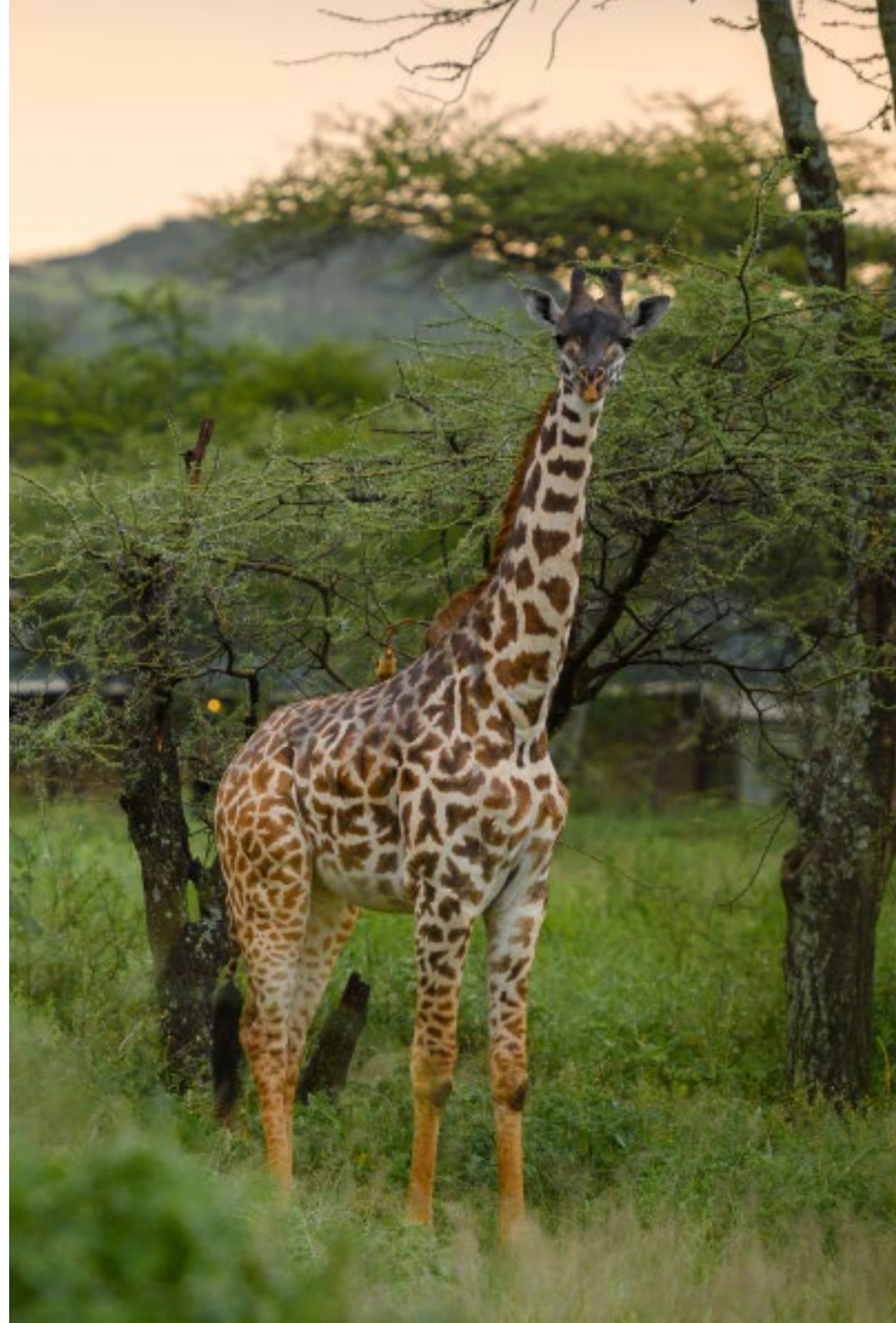
A large variety of Predators are also attracted around the site due to the year-around availability of both Prey and Water from the nearby river to which animals are drawn to since the river does not dry even during dry seasons.

The Camp is tastefully decorated with all the amenities one would expect in a 5 Star Luxury Camp. All the 20 Luxury Tents are ensuite with Flushing Toilets & Pressurised Running Showers with 24 hour Power supply.

The Rooms and the Guest areas have been specifically designed to offer the Guests an optimum 180-degree view while on their bed or while enjoying their meal or drinks and to bring them as close to the nature as possible from the covered verandas. These stunning views embrace the sparsely spaced Acacia Tortillias Trees with the abundance of animals in the vicinity making the experience awe-inspiring.









GUEST SLEEPER TENTS VARIETY:

14 Double Tent Rooms - 45 sqm each
04 Twin Tent Rooms - 45 sqm each
01 Family Tent (Interconnected) - 105 sqm. All Tents having uninterrupted Panoramic views.

BED & TENT SIZES:

Double bed - 2000mm x 2000mm
Twin beds - 1200mm x 2000mm

TENT FEATURES:

En- Suite Toilet & Shower with Nature views from both Ultra Luxury Memory Foam Beds
Extra Spacious Private Verandah & Viewing Deck In-Room Safes, Tea/Coffee making facility Hair Dryer (Upon guest request) 2-way Radios, Floor Standing Fan 24 Hour Power Backup Rechargeable Torch, Solar water heater Pressurized running Showers Mosquito Repellent

LOCATION:

In between Rongai/Nyaroboro Hills & Moru Kopjes on the Mbalageti/Seronera River
25 kms from Seronera Airstrip
300 kms from Arusha
42 kms from Naabi Hill Gate

ACTIVITIES:

Masai Cultural Lessons, Story Telling around fireplace, Swahili Lessons, Star Gazing, Boma Dinner, Bush Dinner, *Breakfast in Bed, *Breakfast at Tent deck, *Bush Breakfast, *Bush Lunch, Full Day Game Drive, Half Day Dame Drive, Balloon Safaris, Lake Magadi / Moru Kopjes Excursions.

*(*Recommended for Honeymooners)*

FACILITIES:

Laundry Service, Spa, Lounge, Boutique Shop, Books Library, Board Games, Driver guide accomodation, Wifi Internet

BAR & DINING:

Fully fledged bar, Spacious dining tent (110sqm)





This particular camp is located 17km from Seronera HQ / Airstrip, and lies right in the heart of central Serengeti. The spectacular and secluded location of this camp boasts all year round game which choose to graze around the camp due to its lagoon type contoured landscape, where the camps is surrounded on three sides by water catchments. There are also large acacia trees spread sparingly across the camp which adds on to create a tranquil feel of the camp and also helps provide natural shading assisting to keep cool the tents during the hot summer months.

The Northern side of the camp overlooks the vast and beautiful Serengeti plains with visibility of the Kopjes Hills which are the preferred surroundings for the large prides of resident lions, who don't have to go through much effort to find their prey due to the game always found around the water catchments surrounding the camp.

Another unique feature this camp site offers is the passing of the migration right through the Camp which adds on to the excitement of being able to see the wildlife through the comfort of sitting in your plush rooms or the guest areas. The guest facilities have been thoughtfully placed where one can enjoy a spa session after a strenuous day on safari.

The Ole Serai – Turner Spring Luxury Camp will consist of, 20 Luxury Guest Tents that are set out and specially designed with maximum guest privacy in mind. it's unique tent designs will be able to offer in excess of 180 degree of clear views from ones bed, creating a feeling of the tent room being out in the open, whilst still providing a sense of privacy, security and comfort to the guests. The camp boasts fine dining experiences, luxurious and comfortable beddings and furnishings, personalized and butler services if equired, apart from a wide range of extensive features.









GUEST SLEEPER TENTS VARIETY:

14 Double Tent Rooms - 45 sqm each

04 Twin Tent Rooms - 45 sqm each

01 Family Tent (Interconnected) - 105 sqm.

All Tents having uninterrupted Panoramic views.

BED & TENT SIZES:

Double bed - 2000mm x 2000mm

Twin beds - 1200mm x 2000mm

TENT FEATURES:

En- Suite Toilet & Shower with Nature views from both Ultra Luxury Memory Foam Beds
Extra Spacious Private Verandah & Viewing Deck, In-Room Safes, Tea/Coffee making facility
Hair Dryer (Upon guest request) 2-way Radios, Floor Standing Fan 24 Hour Power backup, Rechargeable Torch, Solar water heater, Pressurized running Showers, Mosquito Repellent

LOCATION:

Located Centrally within the Serengeti National Park in Full view of the great Wildebeest Migration, 318 kms from Arusha, 64 kms from Naabi Hill Gate, 17 kms from Seronera Airstrip

ACTIVITIES:

Masai Cultural Lessons, Story Telling around fireplace, Swahili Lessons, Star Gazing, Boma Dinner, Bush Dinner, Full Day Game Drive, Half Day Game Drive, Balloon Safaris.

FACILITIES:

Laundry Service, Spa, Lounge, Boutique Shop, Books Library, Board Games, Driver guide accommodation, Wifi Internet.

BAR & DINING:

Fully fledged bar, Spacious dining tent (110sqm)





This Luxury Camp is strategically located within the northern (Kogatende) area of the famous Serengeti National Park in Tanzania and is set amidst the most prime areas of the Serengeti following the path of the great migration, sparsely inhabited by large Acacia as well as Tortilis Tree's and is home to several species of wildlife that reside in this area year round due to catchments of water bodies around the area. Due to the Campsite's ideal location, the great spectacle of the world-famous annual migration can be witnessed almost as close as to the camp's doorsteps – since the site lies along one of the main migratory corridors/routes, which the wildebeest use during their Great Migration going to and fro the North and South of the Serengeti.

A large variety of Predators are also attracted around the site due to the migration and availability of both Prey and Water from the nearby river to which animals are drawn. The Camp is tastefully decorated with all the amenities one would expect in a 5 Star Luxury Camp. All the 14 Luxury Tents are unsuited with Flushing Toilets & Pressurized Running Showers with 24 hour Power supply. The Rooms and the Guest areas have been specifically designed to offer the Guests an optimum 180-degree view while on their bed or while enjoying their meal or drinks and to bring them as close to the nature as possible from the covered verandas. These stunning views embrace the sparsely spaced Acacia Tortillis Trees with the abundance of animals in the vicinity making the experience awe-inspiring.

The evenings can be enjoyed sitting around the fireplace while exchanging the day's adventures with other guests sipping cocktails or having meals at our Maasai Boma, where the background music is nature's unique sounds mostly dominated by the lions roaring as if in celebration to welcome you.









GUEST SLEEPER TENTS VARIETY:

10 Luxury Double Tent Rooms - 45 sqm each
03 Luxury Twin Tent Rooms - 45 sqm each.
All Tents having uninterrupted panoramic views

BED & TENT SIZES:

Double bed - 2000mm x 2000mm
Twin beds - 1200mm x 2000mm

TENT FEATURES:

En-Suite Toilet & Shower with Nature views, Ultra Luxury Memory Foam Beds, Extra Spacious Private Verandah & Viewing Deck In-Room Safes, Tea/Coffee making facility, Hair Dryer (Upon guest request), 2-way Radios, Floor Standing Fan, 24-Hour Power Backup, Rechargeable Torch, Solar water heater, Pressurized running Showers, Mosquito Repellent

LOCATION:

Located in the Northern (Kogatende)
Serengeti National Park
454 kms from Arusha
2.5 kms from Mara River
1.5 kms from the Kogatende Airstrip

ACTIVITIES:

Masai Cultural Lessons, Story Telling around fireplace, Swahili Lessons, Star Gazing, Boma Dinner, Bush Dinner, *Private Dinner at Tent Deck, *Breakfast in Bed, *Breakfast at Tent deck, *Bush Breakfast, *Bush Lunch, Full Day Game Drive, Half Day Game Drive, Balloon Safaris, (**Recommended for Honeymooners*)

FACILITIES:

Laundry Service, Spa, Lounge, Boutique Shop, Books Library, Board Games, Driver guide accomodation, Wifi Internet

BAR & DINING:

Fully fledged bar, Spacious dining tent (110sqm)





“The Ole Serai Luxury Camp - Seronera” is located 14kms from Seronera HQ / Airatrip, and lies right in the heart of Central Serengeti. It is located on a spectacular and secluded location perched atop the slopes of Makoma Hills overlooking the magnificent Makoma Plains (famous for its large numbers of resident cheetas) and the Thatch Kopjes (famous for its large Makoma prides of resident lions). The location boasts all year round game and a large population of wildcats - who are drawn to the large concentration of prey in and around the area.

Another Unique advantage this site offers is the expansive and unobstructed views over the vast grassy Makoma plains - where you are sure to see a wide range of wildlife passing through the open grasslands all year round. Even more spectacular is the view during the famous annual migration where thousands of wildebeest can be seen passing through the Serengeti plains right from the comfort of your rooms or the guest areas. The guest rooms and facilities have also been thoughtfully and sparingly placed to take full advantage of the views and scenery.

The “Ole Serai Luxury Camp - Seronera” consists of 9 Luxury Tents set out and designed with maximum Guest privacy in mind and all the facilities expected on a 5* luxury Camp with it’s unique tent design which offer 180 views from the rooms. The Camps offers the same quality service standards, facilities as well as features experienced in our other “Ole Serai Luxury Camp” Campsites.

The Camp is conveniently located approximately 26 minutes drive from the Seronera Airstrip and all the essential routes for Game drives in and around Makoma Hills are easily accesible from the Campsite - making it very suitable and easy for viewing an extensive array of Wildlife and nearby attractions the Serengeti has to offer.









GUEST SLEEPER TENTS VARIETY:

06 Double Tent Rooms - 45 sqm each

03 Twin Tent Rooms - 45 sqm each

All Tents having uninterrupted Panoramic views.

BED & TENT SIZES:

Double bed - 2000mm x 2000mm

Twin beds - 1200mm x 2000mm

TENT FEATURES:

En- Suite Toilet & Shower with Nature views, Ultra Luxury Memory Foam Beds, Extra Spacious Private Verandah & Viewing Deck, In-Room Safes, Tea/Coffee making facility, Hair Dryer (Upon guest request), 2-way Radios, Floor Standing Fan, 24-Hour Power Backup, Rechargeable Torch, Solar water heater, Pressurized running Showers, Mosquito Repellent

LOCATION:

Located on a spectacular and secluded location perched atop the slopes of Makoma Hills overlooking the magnificent Makoma Plains.

454 kms from Arusha

14 kms from Seronera Airstrip

ACTIVITIES:

Masai Cultural Lessons, Story Telling around fireplace, Swahili Lessons, Star Gazing, Boma Dinner, Bush Dinner, *Breakfast in Bed, *Breakfast at Tent deck, *Bush Breakfast, *Bush Lunch, Full Day Game Drive, Half Day Game Drive, Balloon Safaris.
(*Recommended for Honeymooners)

FACILITIES:

Laundry Service, Spa, Lounge, Boutique Shop, Books Library, Board Games, Driver guide accommodation, Wifi Internet

BAR & DINING:

Fully fledged bar, Spacious dining tent (110sqm)





Built in a stunning Afro-Arabic design with all the splendor of a Sultans' Palace, sitting on the lap of the beautiful Indian Ocean, boasting flawless white sandy beaches and waves breaking over coral reefs and sand bars offshore – perfect for the ultimate, sun-kissed African get-away.

The Resort has 136 Sea facing Rooms, each having its own private balcony with sliding glass doors that open to the beach front, with en-suite bathrooms, air conditioning, telephone, satellite television, mini bar, internet connectivity, king size or twin beds, inter connecting rooms and orthopedic beds available.

If you are looking for an incentive flavored by exciting events arranged with creative flair and imagination or you plan to hold a conference highlighted by a closing theme dinner;

Or perhaps you need something simpler, a board meeting in the morning with water sports in the afternoon? Whatever your requirements, The Kunduchi Conference Centre provides the perfect setting.

Our meeting and conference facilities are designed to cater for the most elaborate event down to the simplest and our team of organizers are accustomed to coming up with solutions to fit your needs.

Not forgetting our meeting facilities are complemented by well-appointed guest rooms, expansive grounds with landscaped gardens, restaurants to suite every taste, 500 meters of pristine beach all nestled in a unique setting.









ACCOMMODATION:

122 Superior Sea View Rooms
10 Superior Deluxe Sea View Rooms
02 Executive Sea View Suites
02 Honeymoon Sea View Suites

DINING & BAR:

Merikebu Restaurant is set thoughtfully to give you a generous view of the Indian Ocean and serves largely Buffet breakfast, lunch & dinner.

Mawimbi Lounge is a unique boat shaped bar set right on the beach with a natural sea breeze.

Bongoyo Bar is a unique island bar with an ocean view

Pool Bar is set near the swimming pool & has view of pool as well as ocean.

BANQUETING & CONFERENCING:

Kikwete Hall for up to 1400 pax
Kambarage Hall for up to 300 pax
Mandela & Mkapa Hall for up to 200 pax
Nujoma & Annan Hall for up to 50 pax
Boardroom for up to 30 pax
Breakout Rooms I-IV up to 15 pax

FACILITIES:

Swimming Pool
Health & Fitness Facilities
Massage & Beauty Parlor
Wet-n-Wild Water Park
Go Kart Track
Business Centre

ACTIVITIES:

Waterpark
Tours & Excursions
Water sports like Kite Surfing, Jet skiing etc.
Beach Sports like Beach Volleyball
Beach Soccer etc.
Go-Karting
Trip to Mbudya & Bongoyo Island





Discover Zanzibar Beach Resort where friendship begins. True hospitality has always been the fabric of the Resort.

Situated on the south-west coast of Zanzibar, contiguous to the beautiful Indian Ocean, only ten minutes from the historic exotic Swahili Stone Town and five minutes from the International Airport.

The Resort has 84 luxurious rooms and suites, which range from the Palace Block rooms, set in the magnificent gardens, to en-suite Chalets with balconies that overlook amazing sunsets and catch cooling sea breezes. The rooms are spacious and elegantly endowed. All rooms have air conditioning, color television with satellite channels, high bandwidth internet, mini bar and Tea/Coffee making facilities.

Room Service, Daily Zanzibar shuttle into Stone town, Laundry, Breakfast in the Room, Massage, Pedicure & Manicure, Hair braiding & Tattooing, Currency Exchange, Souvenirs/Gift Shop, Tour Desk, Fax/Photocopying, Ticket Service, Wi-fi – are all available.

The Discovery Sports & Aqua Bar exudes a contemporary yet intimate atmosphere with an at ease lounge and the Resorts Pool Bar offers a wide variety of well-presented Tropical Mock tails and Cocktails, both bars overlook the swimming pool.

The Resorts plush well-appointed Conferencing facilities provide a variety of fully air conditioned meeting venues, all with natural day light; that can cater to over 1200 pax.









ACCOMMODATION:

35 Superior Garden View Rooms
33 Superior Deluxe Garden View Rooms 14 Sea View Chalets 01 Executive Suite 01 Honey-moon Suite

DINING & BAR

Baobab Restaurant is set thoughtfully to give you a generous view of the Indian Ocean and serves largely buffet breakfast, lunch & dinner.

Discovery Bar exudes a contemporary yet intimate atmosphere with comfortable lounge seating overlooking the swimming pool & the ocean.

Bongoyo Bar is a unique island bar with an ocean view.

Pool Bar is set near the swimming pool & has view of pool as well as ocean.

BANQUETING & CONFERENCING:

Karume Hall for up to 1000 pax
Karibu Hall for up to 200 pax
Mandela Hall for up to 60 pax
Sharafu Hall for up to 25 pax

FACILITIES:

Swimming Pool
Health & Fitness Facilities
Massage Parlor
Business Centre

ACTIVITIES:

Historic Stone Town
Tour Spice plantation Tour
Jozani Forest Tour
Dolphin Tour
Prison Island Tour
Safari Blue Tour
and many more....





Kunduchi wet 'n' wild is East and Central Africa's largest water park. With 48 slides and 10 swimming pools, a rain dance platform, designated kids pool, infants pool, obstacle course, international standards performance stage and several dining options including a pool bar with its own grill kitchen, there is something to offer for everyone.

FAST FOOD

Two fast food outlets (Mbudyia & Bongoyo) are available to cater for more than 2,000 guests at once. Our menus are designed to cater for every age and diet.

POOL BAR

Keep cool and beat the heat by sipping cool cocktails, enjoying refreshing fruit shakes and light snacks, all while lounging by the pool. The Coco Cabana is located near the raindance platform to ensure you don't miss out on the party.

KID'S BAR

Designed with our Petite VIP's in mind, the Kidoz Bar & Grill serves delicious smoothies and shakes, fresh delights and mouth watering dishes for every age.

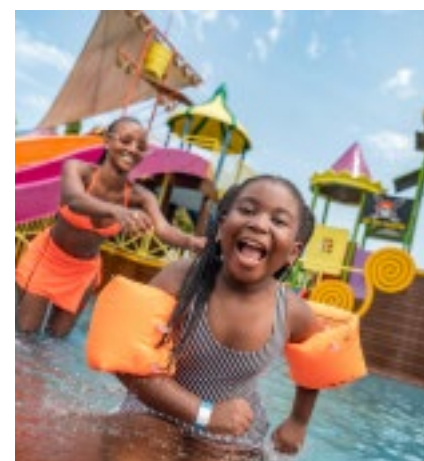
FACILITIES

38 water slides Whether you are a teenager or a parent with toddlers, there is something suitable for every age group. 9 pools With a range of pools for adults and teens, to those for the little ones, you can rest assured that the whole group will have a great time.

RAINDANCE

One of our guests' favorite feature is the Elnino where the DJ pumps the beat all day. Located near the Pool Bar, the party never stops here.









DINING & BAR

Fast Food

Two fast food outlets (Mbudya & Bongoyo) are available to cater for more than 2,000 guests at once. Our menus are designed to cater for every age and diet

Fine Dining

Overlooking the plush gardens, Kambarage Restaurant offers fine dining experience with an expansive À la carte menu or buffet options. From crisp salads to fresh seafood platters, every dish is tailor-made to your taste

Pool Bar

Keep cool and beat the heat by sipping cool cocktails, enjoying refreshing fruit shakes and light snacks, all while lounging by the pool. The Coco Cabana is located near the raindance platform to ensure you don't miss out on the party

Kid's Bar

Designed with our Petite VIP's in mind, the Kidoz Bar & Grill serves delicious smoothies and shakes, fresh delights and mouth watering dishes for every age

FACILITIES

42 water slides

10 pools

Raindance

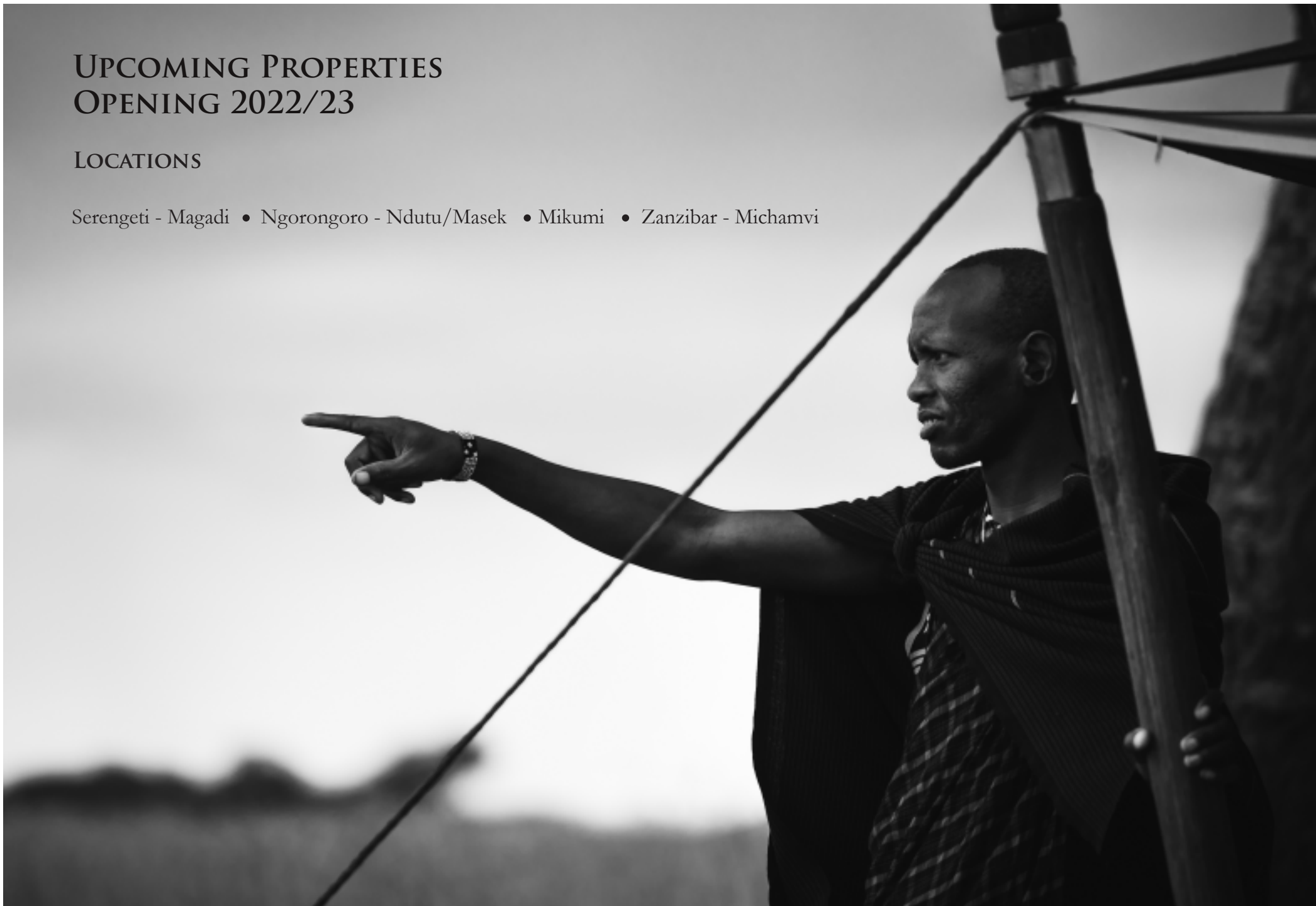
Boutique

Safety Lockers

UPCOMING PROPERTIES OPENING 2022/23

LOCATIONS

Serengeti - Magadi • Ngorongoro - Ndutu/Masek • Mikumi • Zanzibar - Michamvi





UPCOMING HOTELS, LODGES, RESORTS & CAMPS

Hotel Locations

Dar es Salaam - City Centre (5 Stars):

GPS: 6049'0.17"S 39017'26.48"E

Dar es Salaam - City Centre (4 Stars):

GPS: 6048'54.12"S 39017'19.71"E

12 Kms from Julius Nyerere International Airport

Lodge Locations

Mikumi

10 Kms from Kikoboga Airstrip

GPS: 7020'41.90"S 37010'50.56"E

Serengeti - Magadi

14 Kms from Seronera Airstrip

GPS: 2029'45.06"S 34046'17.44"E

Ngorngoro - Ndutu/Masek

4 Kms from Ndutu Airstrip

GPS: 301'49.58"S 3501'28.03"E

Resort Locations

Zanzibar - Michamvi

30 km from Zanzibar International Airport



HEAD OFFICE

Wellworth Hotels, Lodges & Resorts
Suite 9/10, 4th Floor, Raha Towers
Maktaba/Bibi-Titi Junction,
Dar Es Salaam, Tanzania
+255 688 058 365
info@wellworthgroup.com

REGIONAL OFFICE

Wellworth Hotels, Lodges & Resorts
37, TFA Arusha Shopping Centre,
Sokoine Road,
Arusha, Tanzania
+255 688 058 365
arushares@wellworthgroup.com

CENTRAL RESERVATIONS

Wellworth Hotels, Lodges & Resorts
Suite 9/10, 4th Floor, Raha Towers
Maktaba/Bibi-Titi Junction,
Dar Es Salaam, Tanzania
+255 688 058 365
crm@wellworthgroup.com

www.wellworthcollection.co.tz